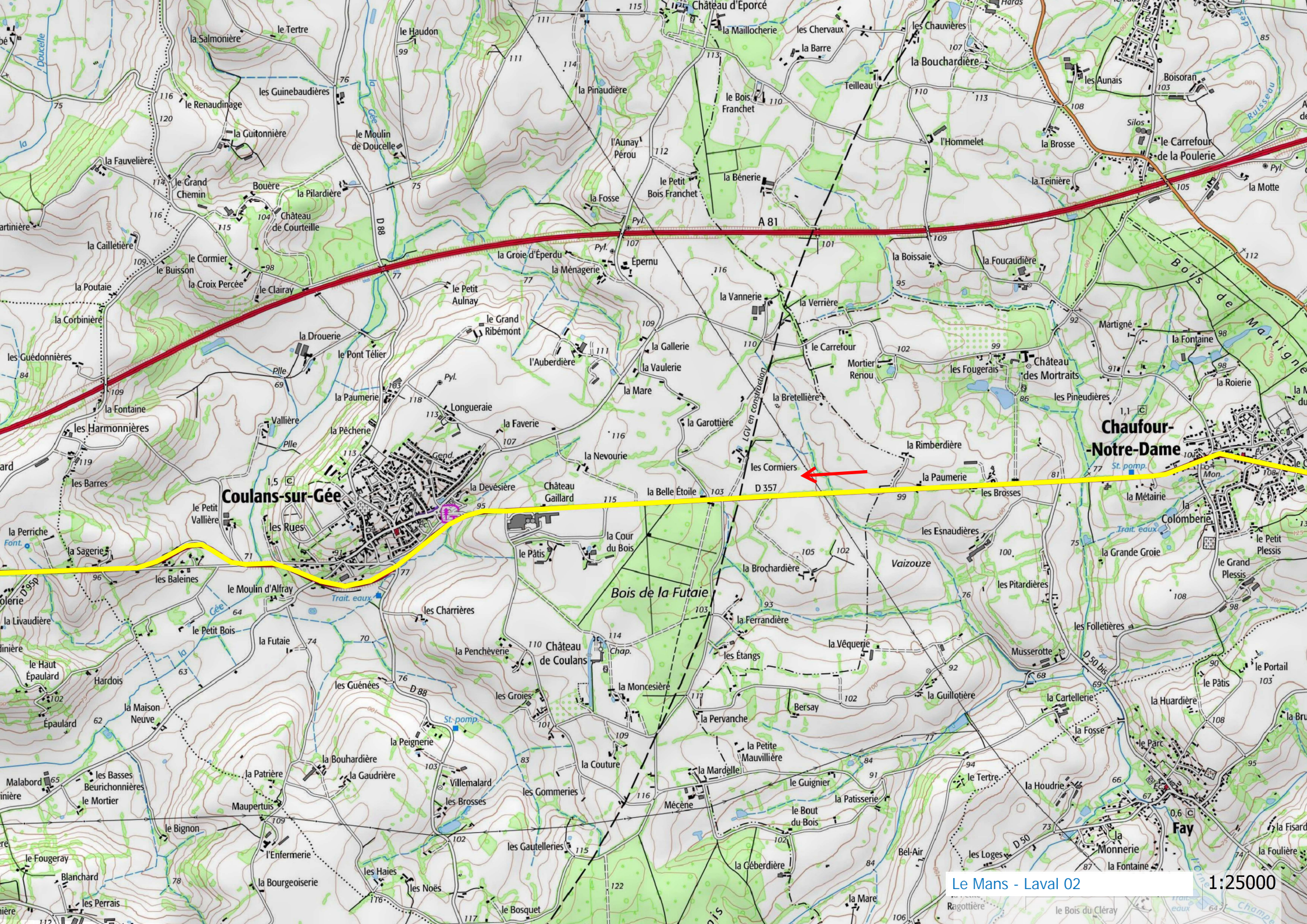
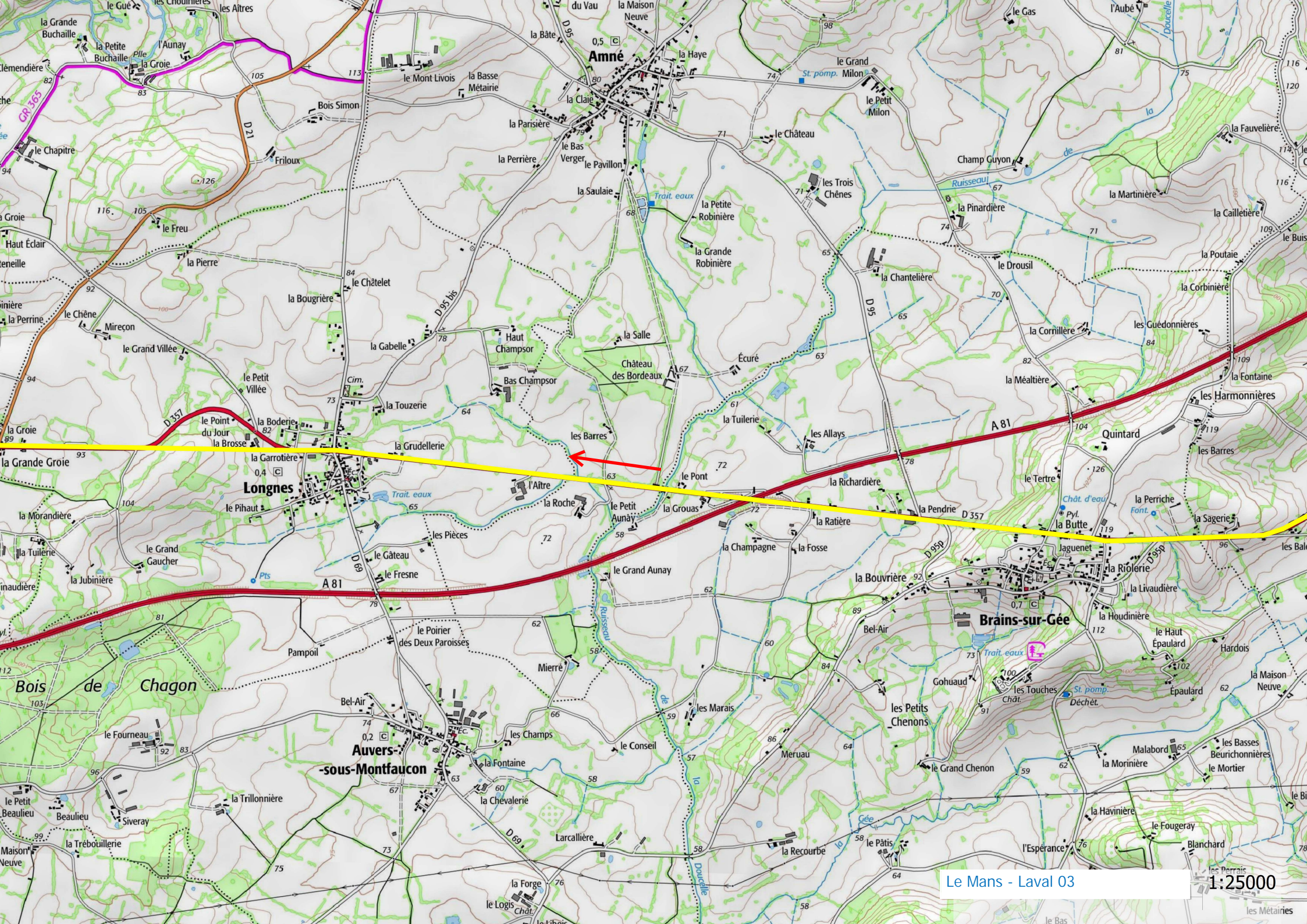


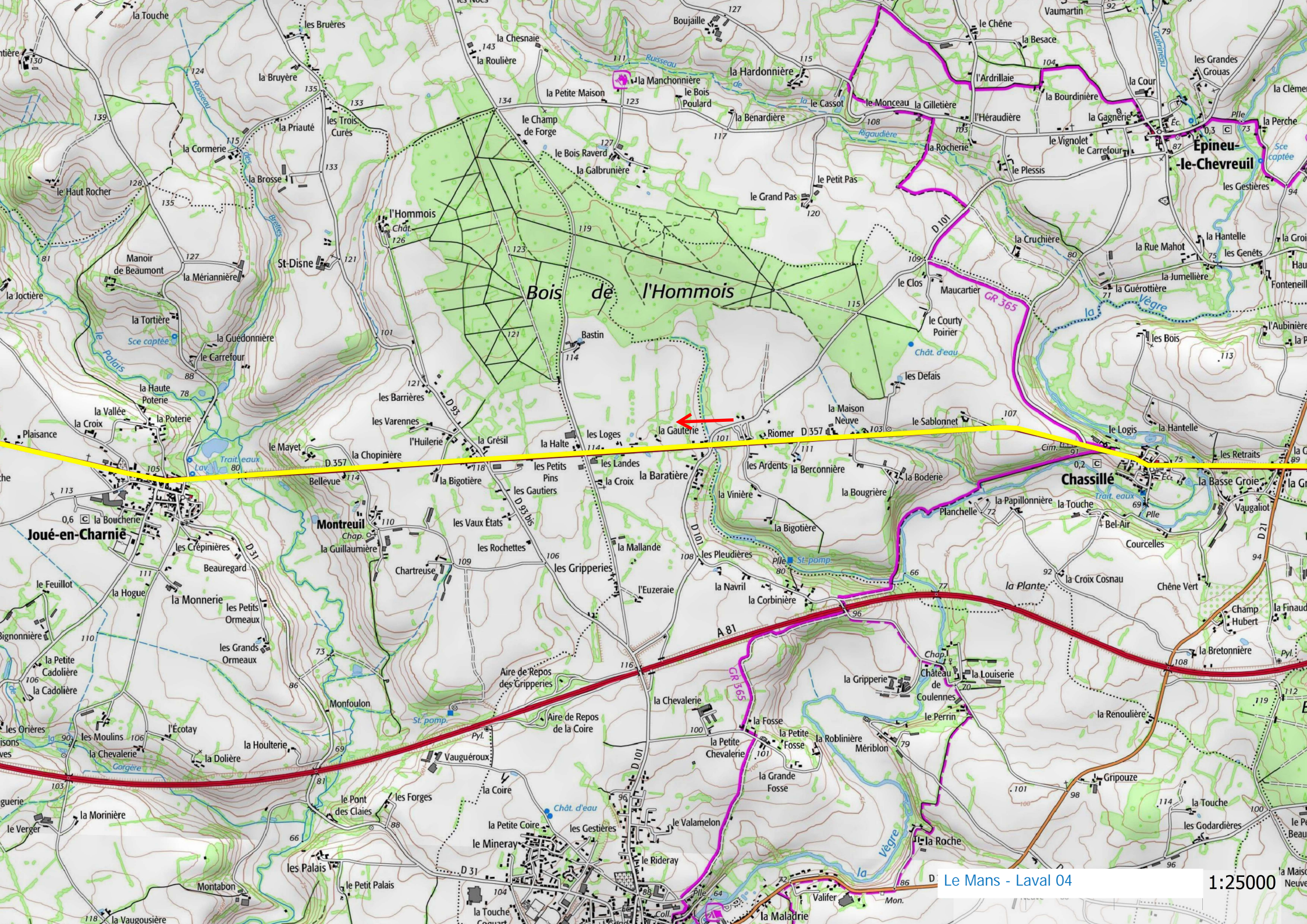
10 - 13/12



**Coullans-sur-Gée**

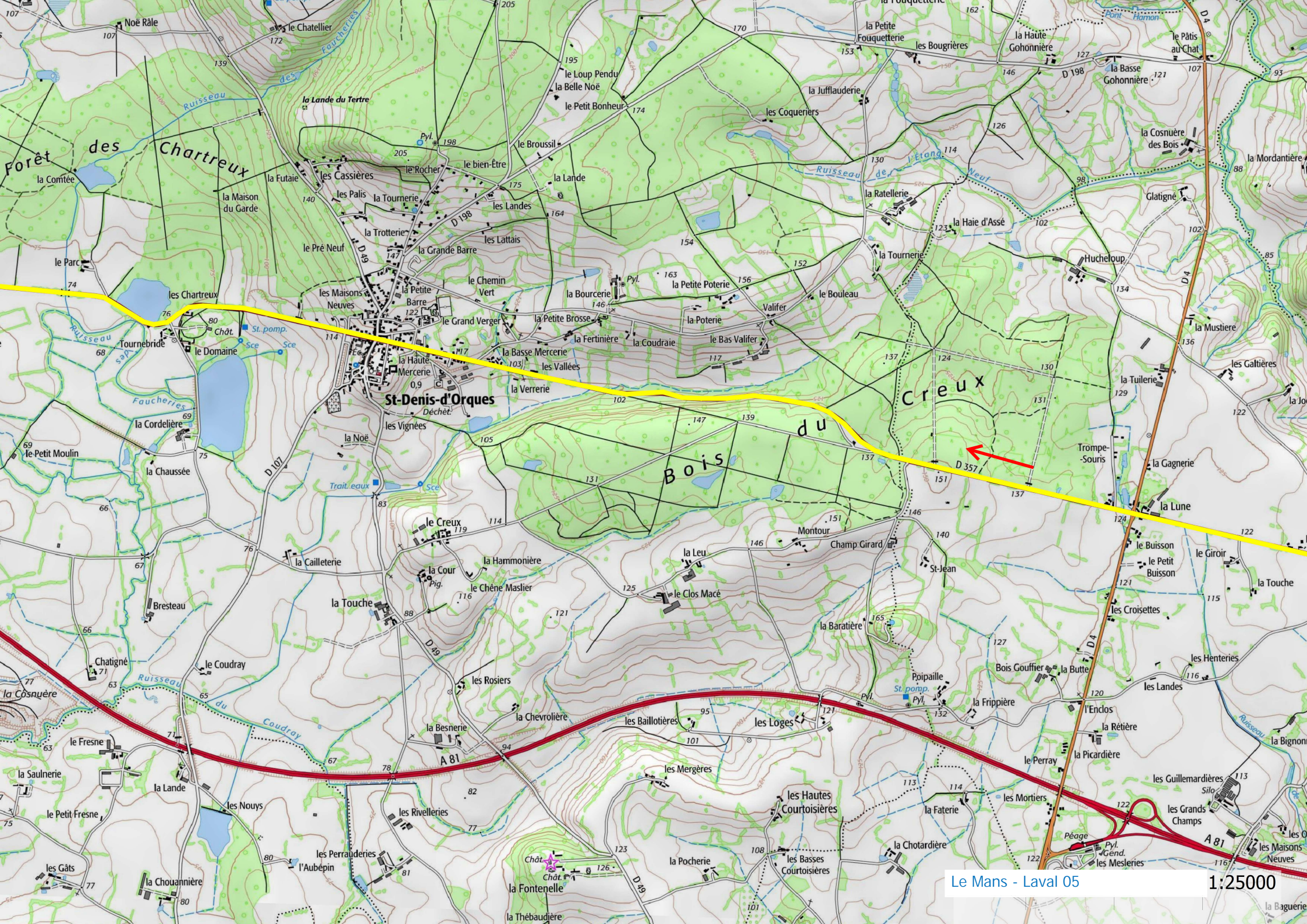
**Chaufour-  
Notre-Dame**





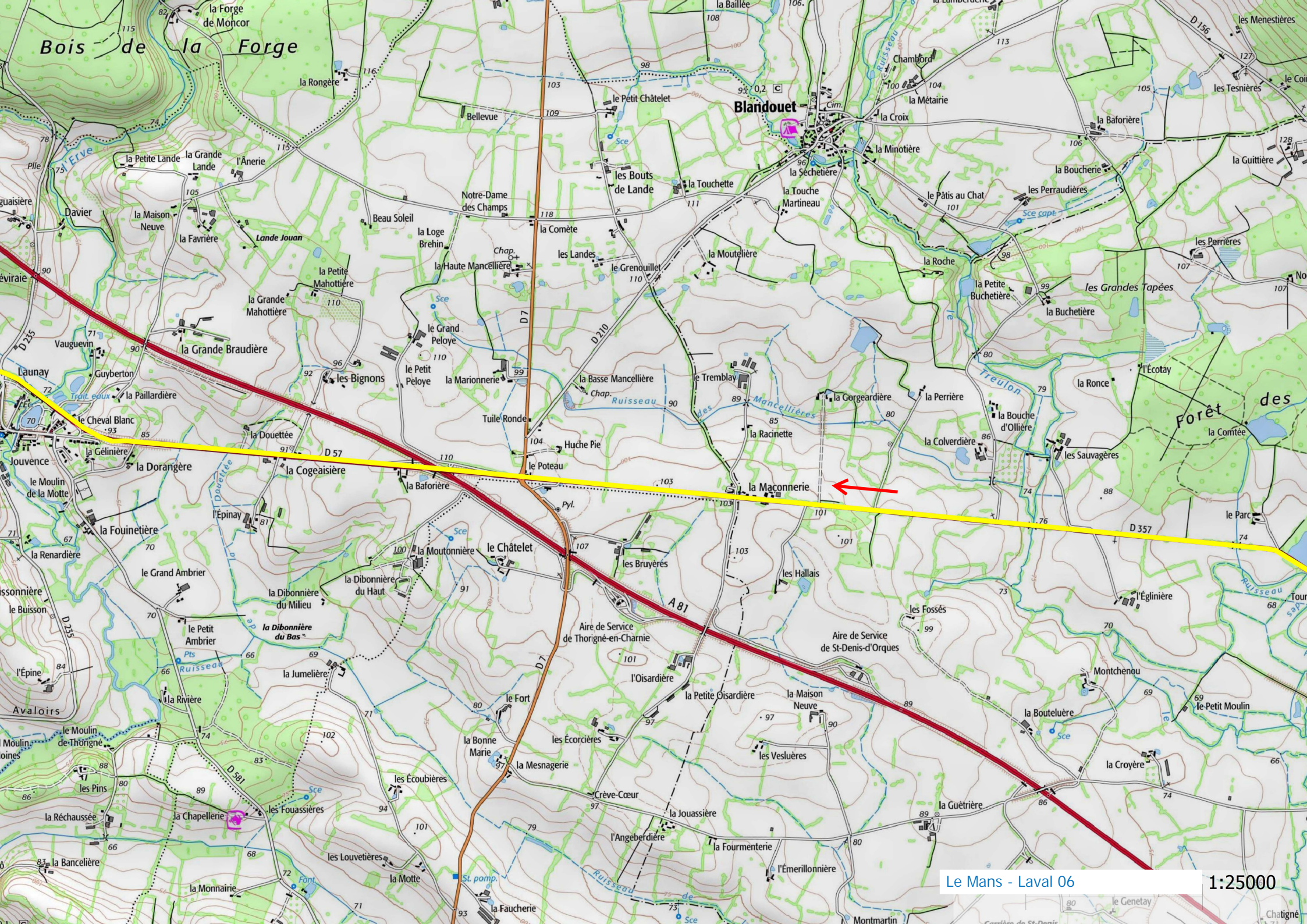
# Bois de l'Hommois

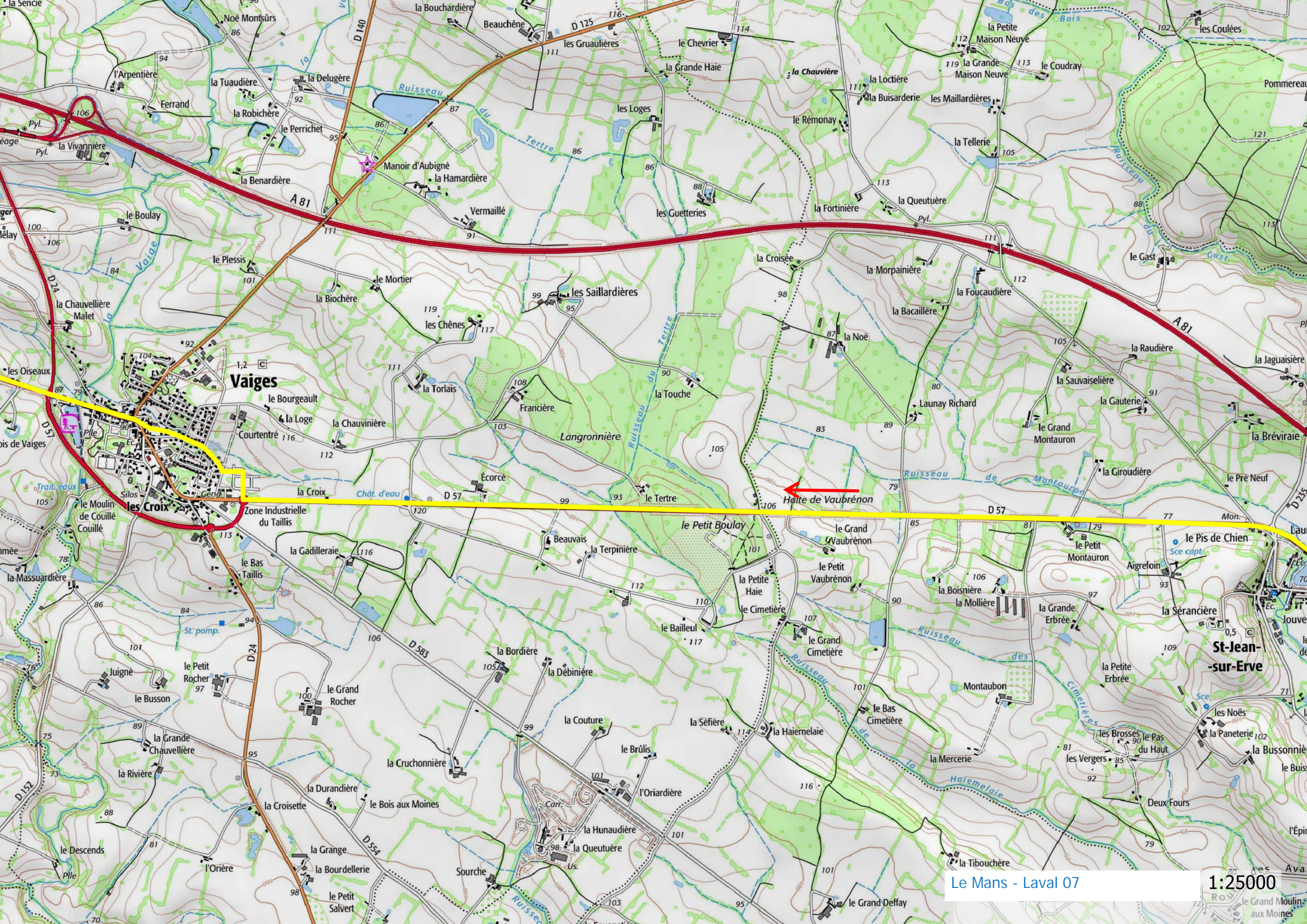
la Gaufferie

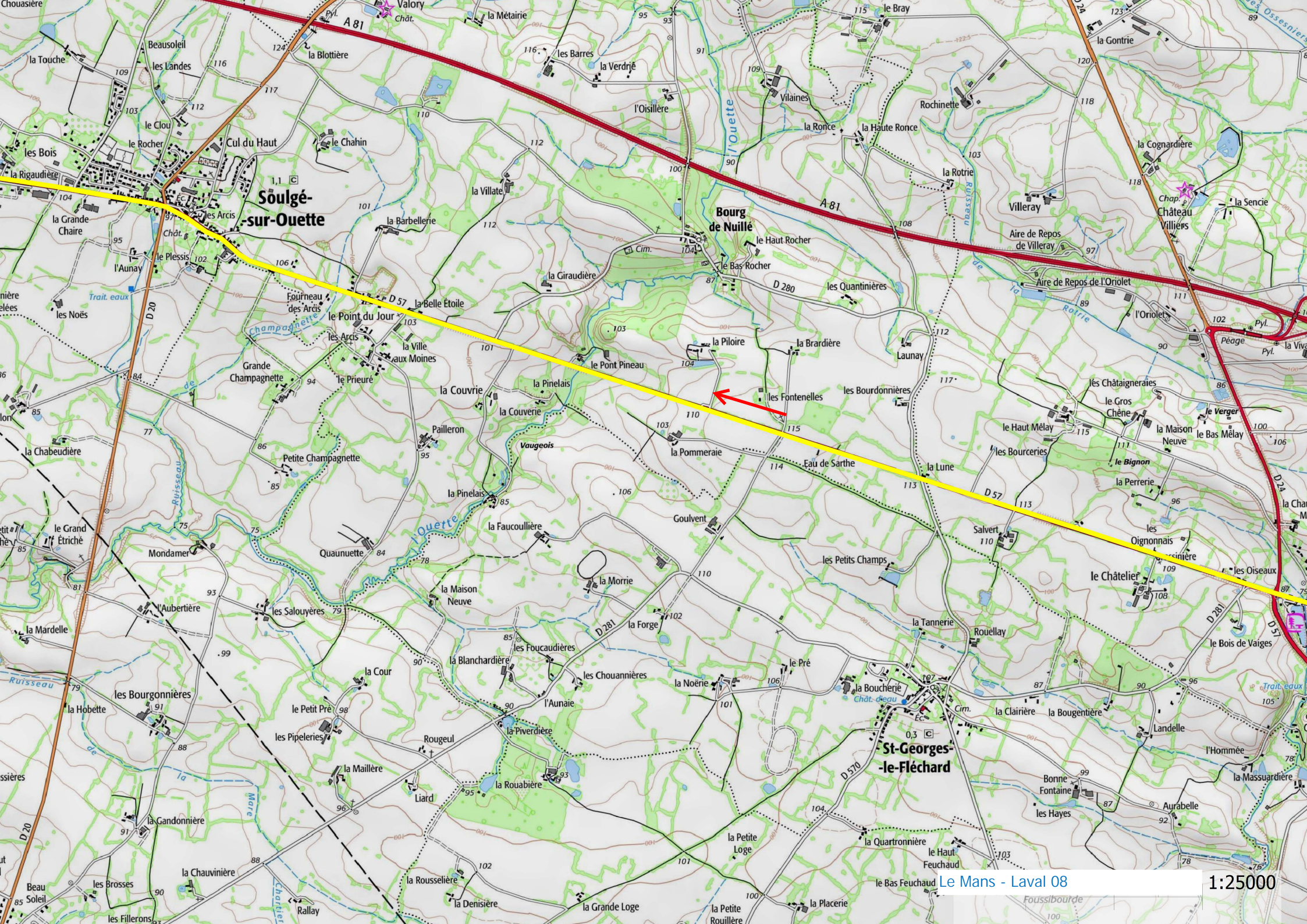


St-Denis-d'Orques

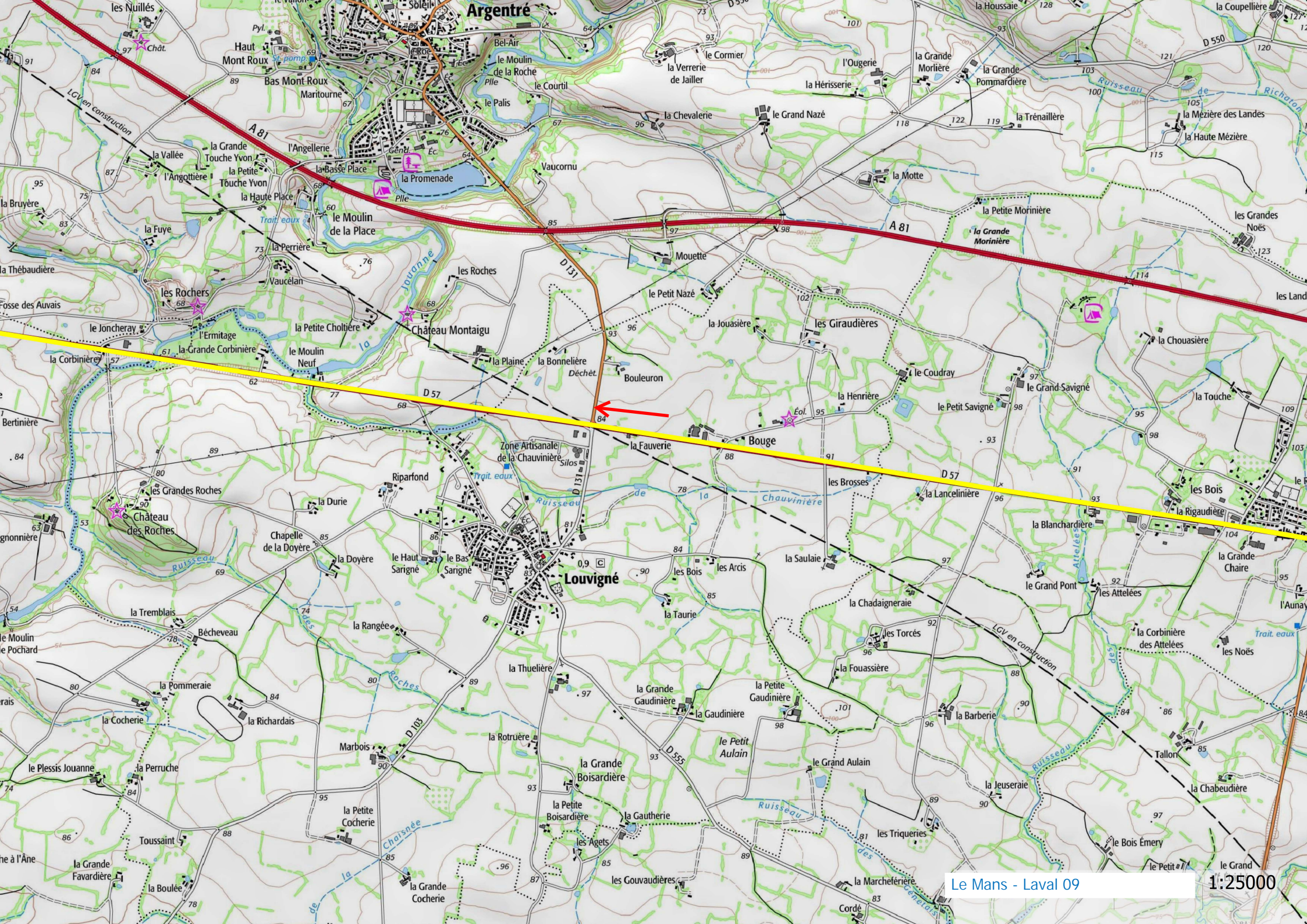
Bois du Creux









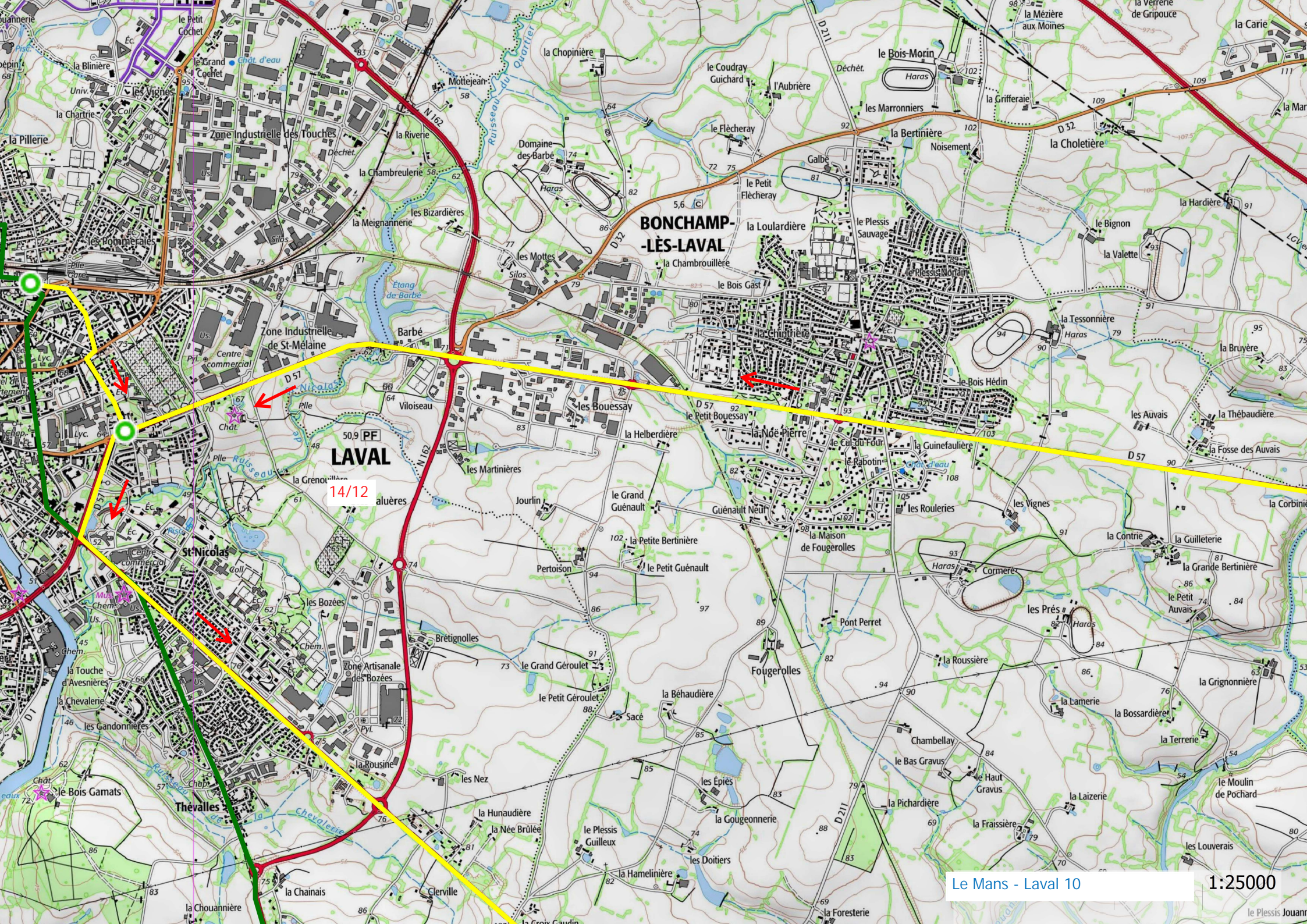


Argentré

Louvigné

Le Mans - Laval 09

1:25000



**BONCHAMP-  
LÈS-LAVAL**

**LAVAL**

14/12